

FIJI ISLAND HOPPING & ADVENTURES

2016-2017

TRIP + PRICE GUIDE

Fiji Edition
Valid 01 April 2016 - 31 March 2017



Winner 2010 & 2013
BEST FIJI EXPERIENCE

FEEJEE EXPERIENCE FIJI



WHY FEEJEE EXPERIENCE?

THIS IS THE REAL FIJI – SUN, SAND AND ADVENTURE. FEEJEE EXPERIENCE TAKES YOU TO THE BEST BEACHES, FANTASTIC RESORTS, AMAZING RAINFORESTS, VIBRANT CITIES & DELIVERS UNBELIEVEABLE EXPERIENCES WITH THE FIJIAN PEOPLE & THEIR CULTURE!

Fiji is made up of 333 islands, the largest and most exciting island being Viti Levu. Feejee Experience offers travel passes that include various islands, letting you explore rare and untouched places you never knew existed in this tropical paradise. We travel by fast boat, air conditioned bus, bilibili raft and even by fins and feet!

- **Why travel on Feejee Experience?** Feejee Experience is about getting you off the tourist trail and into the real Fiji. Fiji is an incredibly diverse country. It's well known for its stunning tropical islands, vibrant reefs and beautiful beaches, but Fiji has so much more to offer! Lush tropical rainforest, crystal clear rivers, spectacular waterfalls, volcanic mud pools and geothermal hot pools are just some of the attractions we visit on Fiji's main island of Viti Levu. The world's friendliest people! Fiji has over 20 different dialects, with each dialect comes a different culture and way of life, add in to the mix Fiji's Indo-Fijian culture (around 45% of Fiji's population descend from Indian immigrants) and the British colonial past and it's clear to see Fiji is the Pacific's cultural melting pot. Feejee Experience is the only tourism operator in Fiji to travel around the main island visiting highland villages, whilst still showing off Fiji's world famous Coral Coast, Mamanuca and Yasawa Islands, as well as the amazing beaches & resorts, which Fiji is so famous for. You can purchase accommodation inclusive passes with a fixed itinerary of between four to twelve days or choose a flexible travel pass that allows you to jump off and on if you have more time. Our passes are valid until you finish your trip, so kick back, relax and experience the real Fiji!
- **Is there always availability?** Feejee Experience is on free sell 365 days per year! This means we will guarantee you a seat even if you are booking at the last minute. How easy is that!
- **Amazing beach resorts.** We offer the best budget resorts that include everything you want in an island experience. Our resorts have won numerous tourism awards and are chosen for their environmental awareness and efforts towards sustainability.
- **Beaches!!!** Fiji is about sun and sand and this is exactly what we offer every day! We have hand picked the best beaches in Fiji including Robinson Crusoe Island, Uprising Beach, Mantaray Island, Blue Lagoon Beach Resort & many other beaches you will visit as part of our passes.
- **Activity inclusions.** All our passes include activities so you can make your hard earned cash go as far as possible. Bilibili rafting, waterfall swimming, rainforest trekking, mud pools and hot pools... to name just a few!
- **World class diving.** All of the resorts we stop at (with the exception of Tanoa Rakiraki) offer world class diving and optional snorkeling. Professional friendly dive operators offer a range of options to suit your interest and ability. For something really special, check out the bull shark dive at Uprising Beach, recently rated as the most unique shark dive experience in the world! Look Mum, no cage!!!!
- **Our Feejee Drivers and Guides.** Our local Drivers and Guides are infectiously enthusiastic about showing off their country and culture. Their big Bula smiles will greet you on your travels as they guide you through the best spots in Fiji on Viti Levu.
- **Cultural stops.** Get amongst the locals. Our passes include unique village stops, school/orphanage visits and traditional kava (welcome) ceremonies. Learn more about the real Fiji with us!
- **Environmentally conscious.** We're conscious of our beautiful environment. Our modes of transport where engines are involved meet and exceed emissions standards. Our resorts are hand picked for their initiatives to ensure their surroundings are not affected by our visits!
- **Help the local community.** Feejee Experience and its passengers love to give back! Just about all the activities included in your Feejee Experience such as village visits and bilibili rafting contribute to the local Fijian people & land owners. We are very specific about ensuring the funds we contribute are used for local community projects such as new buildings for schools, child care or medical facilities. In Nasautoka Village for instance, all our funds go towards their Ministry of Youth scheme to assist the village youth in opportunities outside of the village. On average approximately 15% of your Feejee Experience pass goes directly to the local communities and this is something we are extremely proud of.
- **Awards.** Not that we like to brag but we do love to recognize our teams dedication in helping us win two of the last five Fiji Excellence in Tourism Awards for 'Best Fiji Experience' 2010 & 2013!

Sota tale
"See you soon"

Check out www.feejeeexperience.com for loads more information about your Feejee Experience!

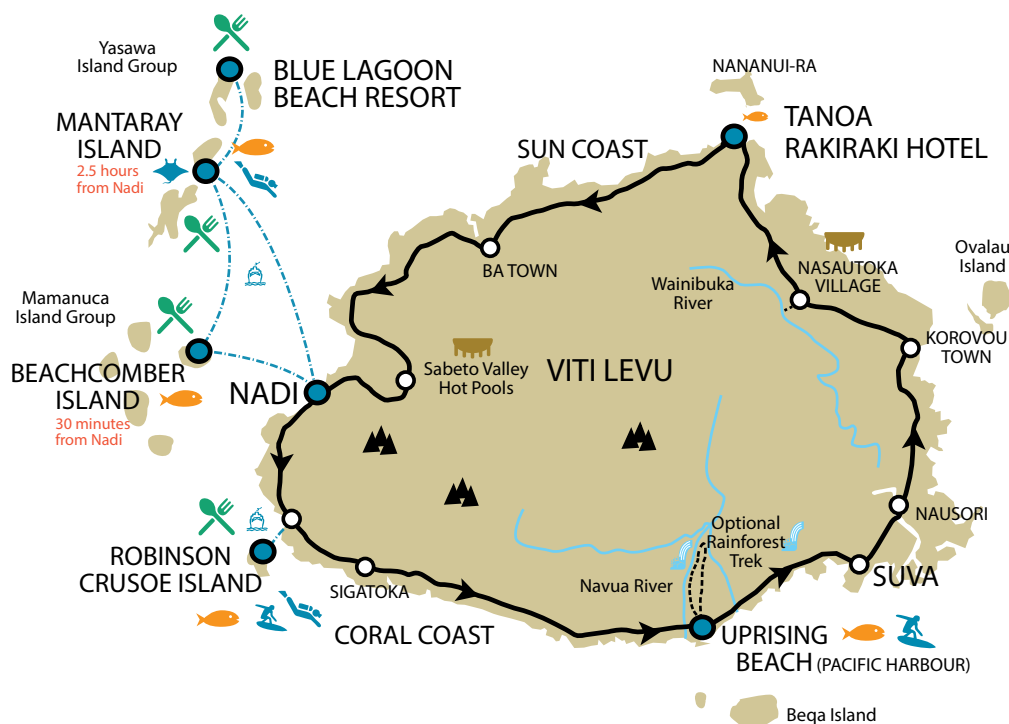


SEGA NA LEQA

"No worries"



HERE ARE THE ISLANDS WE'LL TAKE YOU TO ...



kava noun - Fijian pepper plant
drink, consumed in traditional ceremonies
sega na leqa saying - no worries -
sega na leqa, we're working on fiji time
bula hello, bless you (if you sneeze), life
- *Bula Vinaka Bob, Hi and thank you Bob*
bilibili noun - bamboo raft - *Catch a ride with us on the bilibili*
kerekere please - *I would like to buy those mangos kerekere*
io yes - *Io, those mangos there Bob*
vinaka thankyou - *Vinaka for the mangos Bob - used with Bula for hello*



Fiji map key

- Feejee Experience by land
- Feejee Experience by sea
- Overnight stop
- Some other cool stops we visit
- 🚤 Travel by boat
- 🌊 Rivers
- 🐟 Fishing/Snorkelling/Diving
- 🏄 Surfing
- 💧 Waterfall
- 🏠 Cultural Stop
- 🦘 Mantaray Island Resort
- 🚩 Dive spots
- 🍴 Compulsory Meal Plan

JUST SOME OF THE AWESOME THINGS YOU'LL SEE AND DO...



Accommodation inclusive passes

Vinaka, vinaka, vinaka. Mud pools and Shark diving, who would've thought in Fiji! Thanks Feejee Ex - Gemma, Wales

Feejee Five

FJ\$2,084 dorm / shared basis
FJ\$2,153 double / twin private *



Travel time: 12 days / 11 nights
Departs from Nadi: Mon, Wed, Sat

Includes: 12 Day / 11 Night trip which includes 12 days travel around Viti Levu Island, Robinson Crusoe Island, Beachcomber Island, Mantaray Island and Blue Lagoon Beach Resort! Highlights include plenty of time to relax, swim or dive on Fiji's best beaches, village visits, kava ceremony, hot pools, mud pools, rainforest trek, water fall swimming and 11 nights accommodation with 1 night each at Robinson Crusoe Island, Uprising Beach Resort, Tanoa Rakiraki Hotel and Nadi, 2 nights at Beachcomber Island Resort, 2 nights at Blue Lagoon Beach Resort and 3 nights at Mantaray Island Resort. Includes boat transfers to Robinson Crusoe Island, Beachcomber Island, then onto Blue Lagoon Beach Resort and Mantaray Island Resort, before returning to Nadi. A compulsory meal package is applicable at Robinson Crusoe Island, Beachcomber Island and Blue Lagoon Beach Resort paid direct to the resort upon arrival. Departs Nadi on Monday, Wednesday and Saturdays with pickups at all hotels and resorts.



- Day 1:** Nadi to Robinson Crusoe Island including Nadi Town, jungle boat trip and the afternoon on the island including a snorkelling trip to a nearby reef!
- Day 2:** Robinson Crusoe Island to Uprising Beach including the scenic Coral Coast and the famous rainforest trek before a swim at the mile long Uprising Beach.
- Day 3:** Uprising Beach Resort to Tanoa Rakiraki Hotel including Suva city tour, Nasautoka Highland Village, school / orphanage visit and bilibili rafting
- Day 4:** Tanoa Rakiraki to Nadi including Ba Town, and then onto the Sabeto Valley, where you can soak in natural mud pools - Fiji style!
- Day 5:** Nadi to Beachcomber Island, arrive at this amazing island late morning, just in time for lunch!
- Day 6:** Beachcomber Island, spend a day doing activities or relaxing on your tropical paradise!
- Day 7:** Beachcomber Island to Blue Lagoon Beach Resort. Your first experience of the amazing Yasawa Islands, arriving mid afternoon to take in the amazing beach and activities on offer.
- Day 8:** Spend your day at Blue Lagoon Beach Resort at leisure.
- Day 9:** Blue Lagoon Beach Resort to Mantaray Island Resort. Enjoy your afternoon snorkelling, swimming or participating in one of the many resort activities.
- Day 10:** Spend your day at Mantaray Island at leisure.
- Day 11:** Your last full day, go diving, or snorkelling with the Manta Rays!
- Day 12:** Mantaray Island Resort to Nadi, depart the island and get back to Nadi early evening.

Triple Treat

FJ\$1,811 dorm / shared basis
FJ\$1,990 double / twin private *



Travel time: 10 days / 9 nights
Departs from Nadi: Mon, Wed, Sat

Includes: 10 Day / 9 Night trip which includes 10 days travel around Viti Levu Island, Robinson Crusoe Island, Beachcomber Island and Mantaray Island! Highlights include plenty of time to relax, swim or dive on Fiji's best beaches, Robinson Crusoe Island, Mantaray Island, Beachcomber Island, village visits, kava ceremony, hot pools, mud pools, rainforest trek, water fall swimming and 9 nights accommodation with 1 night each at Robinson Crusoe Island, Uprising Beach Resort, Tanoa Rakiraki Hotel, and Nadi, 2 nights at Beachcomber Island Resort and 3 nights at Mantaray Island Resort. Includes boat transfers to Robinson Crusoe Island, Beachcomber Island, then onto Mantaray Island before returning to Nadi. A compulsory meal package is applicable at Robinson Crusoe Island, Beachcomber Island and Mantaray Island paid direct to the resort upon arrival. Departs Nadi on Monday, Wednesday and Saturdays with pickups at all hotels and resorts.



- Day 1:** Nadi to Robinson Crusoe Island including Nadi Town, jungle boat trip and the afternoon on the island including a snorkelling trip to a nearby reef!
- Day 2:** Robinson Crusoe Island to Uprising Beach including the scenic Coral Coast and the famous rainforest trek before a swim at the mile long Uprising Beach.
- Day 3:** Uprising Beach Resort to Tanoa Rakiraki Hotel including Suva city tour, Nasautoka Highland Village, school / orphanage visit and bilibili rafting
- Day 4:** Tanoa Rakiraki to Nadi including Ba Town, and then onto the Sabeto Valley, where you can soak in natural mud pools - Fiji style!
- Day 5:** Nadi to Beachcomber Island, arrive at this amazing island late morning, just in time for lunch!
- Day 6:** Beachcomber Island, spend a day doing activities or relaxing on your tropical paradise!
- Day 7:** Beachcomber Island to Mantaray Island Resort, cruise north to Mantaray Island arriving early afternoon.
- Day 8:** Mantaray Island, spend all day on this amazing island snorkelling, diving, swimming or spotting manta rays!
- Day 9:** Mantaray Island, spend your second day doing the same as the first!
- Day 10:** Mantaray Island to Nadi, depart the island and get back to Nadi early evening.

Mangos & Mantarays

FJ\$1,339 dorm / shared basis
FJ\$1,460 double / twin private *



Travel time: 8 days / 7 nights
Departs from Nadi: Mon, Wed, Sat

Includes: 8 Day / 7 Night trip which includes 8 days travel around Viti Levu Island, Robinson Crusoe Island and Mantaray Island. Highlights include plenty of time to relax, snorkel, swim or dive on Fiji's best beaches, Robinson Crusoe Island, Mantaray Island, village visits, sevusevu ceremony, hot pools, mud pools, jungle trek, water fall swimming and 7 nights accommodation with 1 night each at a Robinson Crusoe Island, Uprising Beach Resort, Tanoa Rakiraki Hotel, Nadi and 3 nights at Mantaray Island Resort. Includes return boat transfers to Robinson Crusoe Island and Mantaray Island. A compulsory meal package is applicable at Robinson Crusoe Island and Mantaray Island which is paid direct to the resort upon arrival. Departs Nadi on Monday, Wednesday and Saturdays with pickups at all hotels and resorts.



- Day 1:** Nadi to Robinson Crusoe Island including Nadi Town, jungle boat trip and the afternoon on the island including a snorkelling trip to a nearby reef!
- Day 2:** Robinson Crusoe Island to Uprising Beach including the scenic Coral Coast and the famous Uprising rainforest trek before a swim at the mile long Uprising Beach.
- Day 3:** Uprising Beach Resort to Tanoa Rakiraki including Suva city tour, Nasautoka Highland Village, school / orphanage visit and bilibili rafting
- Day 4:** Tanoa Rakiraki to Nadi including Ba Town, and then onto the Sabeto Valley, where you can soak in natural mud pools - Fiji style!
- Day 5:** Nadi to Mantaray Island, arrive at this amazing island late morning, just in time for lunch!
- Day 6:** Mantaray Island, spend all day on this amazing island snorkelling, diving, swimming or spotting mantarays!
- Day 7:** Mantaray Island, spend your second day doing the same as the first!
- Day 8:** Mantaray Island to Nadi, depart the island and get back to Nadi early evening.

Lei Low

FJ\$940 dorm / shared basis
FJ\$1,076 double / twin private *



Travel time: 6 days / 5 nights
Departs from Nadi: Mon, Wed, Sat

Includes: 6 Day / 5 Night trip which includes 6 days travel around Viti Levu Island, Robinson Crusoe Island and Beachcomber Island. Highlights include plenty of time to relax, swim or dive on Fiji's best beaches, world famous Beachcomber island, village visits, kava ceremony, hot pools, mud pools, rainforest trek, water fall swimming and 5 nights accommodation with 1 night each at Robinson Crusoe Island, Uprising Beach Resort, Tanoa Rakiraki Hotel, Nadi and Beachcomber Island. Includes return boat transfers to Robinson Crusoe Island and Beachcomber Island. A compulsory meal package is applicable at Robinson Crusoe Island and Beachcomber Island paid direct to the resort upon arrival. Departs Nadi on Monday, Wednesday and Saturdays with pickups at all hotels and resorts.



- Day 1:** Nadi to Robinson Crusoe Island including Nadi Town, jungle boat trip and the afternoon on the island including a snorkelling trip to a nearby reef!
- Day 2:** Robinson Crusoe Island to Uprising Beach including the scenic Coral Coast and the famous rainforest trek before a swim at the mile long Uprising Beach.
- Day 3:** Uprising Beach Resort to Tanoa Rakiraki Hotel including Suva city tour, Nasautoka Highland Village, school / orphanage visit and bilibili rafting
- Day 4:** Tanoa Rakiraki to Nadi including Ba Town, and then onto the Sabeto Valley, where you can soak in natural mud pools - Fiji style!
- Day 5:** Nadi to Beachcomber Island including all day on world famous Beachcomber Island
- Day 6:** Beachcomber Island to Nadi, depart the island and get back to Nadi early evening.

Whole Hula

FJ\$629 dorm / shared basis
FJ\$877 double / twin private *

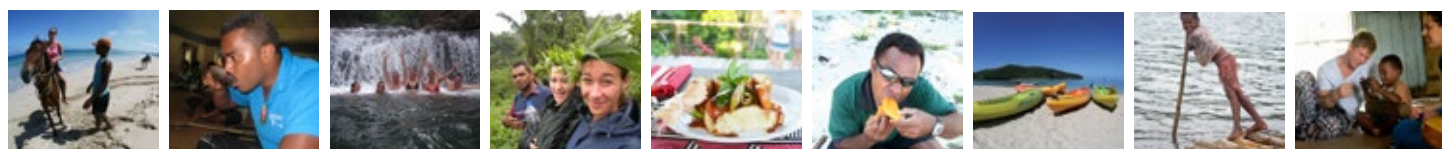


Travel time: 4 days / 3 nights
Departs from Nadi: Mon, Wed, Sat

Includes: 4 Day / 3 Night trip which includes 4 days travel around Viti Levu Island & Robinson Crusoe Island. Highlights include plenty of time to relax, swim or dive on Fiji's best beaches, village visits, kava ceremony, hot pools, mud pools, rainforest trek, water fall swimming and 3 nights accommodation with 1 night each at Robinson Crusoe Island, Uprising Beach Resort & Tanoa Rakiraki Hotel. A compulsory meal package is applicable at Robinson Crusoe Island paid direct to the resort upon arrival. Departs Nadi on Monday, Wednesday & Saturdays with pickups at all hotels & resorts.



- Day 1:** Nadi to Robinson Crusoe Island including Nadi Town, jungle boat trip and the afternoon on the island including a snorkelling trip to a nearby reef!
- Day 2:** Robinson Crusoe Island to Uprising Beach including the scenic Coral Coast and the famous rainforest trek before a swim at the mile long Uprising Beach.
- Day 3:** Uprising Beach Resort to Tanoa Rakiraki Hotel including Suva city tour, Nasautoka Highland Village, school / orphanage visit and bilibili rafting
- Day 4:** Tanoa Rakiraki to Nadi including Ba Town, and then onto the Sabeto Valley, where you can soak in natural mud pools - Fiji style!



* Double / Twin Private basis prices are per person valid for two passengers travelling and booking together.

Transport only passes

Passengers are able to break the trip by jumping off and staying anywhere they want for as long as they want.

Hula Loop

FJ\$524



Recommended travel time: 4+ days
Departs from Nadi: Mon, Wed, Sat

Includes: 4 days travel around Viti Levu Island. Highlights include plenty of time to relax, swim or dive on Fiji's best beaches, village visits, kava ceremony, hot pools, mud pools, jungle trek, water fall swimming and much more. Accommodation is not included in the price of the pass to allow unlimited flexibility and the ability to jump on and jump off anywhere on route around Fiji's largest island. Accommodation can be booked by the Feejee Experience Guide each day on your behalf and this is then paid direct to the resort.

- Day 1:** Nadi to Robinson Crusoe Island including Nadi Town, jungle boat trip and the afternoon on the island including a snorkelling trip to a nearby reef!
- Day 2:** Robinson Crusoe Island to Uprising Beach including the scenic Coral Coast and the famous Uprising rainforest trek before a swim at the mile long Uprising Beach.
- Day 3:** Uprising Beach Resort to Tanoa Rakiraki Hotel including Suva city tour, Nasautoka Highland Village, school / orphanage visit and bilibili rafting
- Day 4:** Tanoa Rakiraki to Nadi including Ba Town, and then onto the Sabeto Valley, where you can soak in natural mud pools – Fiji style!

Big Kahuna

FJ\$1,049



Recommended travel time: 11+ days
Departs from Nadi: Mon, Wed, Sat

Includes: up to 7 days travel on Viti Levu Island and 7 days travel in the Mamanuca & Yasawa Islands. Highlights include plenty of time to relax, swim or dive on Fiji's best beaches, village visits, kava ceremony, hot pools, mud pools, jungle trek, water fall swimming and much more. Travel on Viti Levu Island is unlimited whilst travel to the Mamanuca & Yasawa Islands is valid for up to 7 days. Accommodation is not included in the price of the pass to allow unlimited flexibility and the ability to jump on and jump off anywhere on route. Accommodation on Viti Levu can be booked by the Feejee Experience Guide each day on your behalf and this is then paid direct to the resort. Accommodation on the other islands is easily booked by yourself or on the vessel whilst travelling around the islands a day prior to arrival.

- Day 1:** Nadi to Robinson Crusoe Island including Nadi Town, jungle boat trip and the afternoon on the island including a snorkelling trip to a nearby reef!
- Day 2:** Robinson Crusoe Island to Uprising Beach including the scenic Coral Coast and the famous rainforest trek before a swim at the mile long Uprising Beach.
- Day 3:** Uprising Beach Resort to Tanoa Rakiraki Hotel including Suva city tour, Nasautoka Highland Village, school / orphanage visit and bilibili rafting
- Day 4:** Tanoa Rakiraki to Nadi including Ba Town, and then onto the Sabeto Valley, where you can soak in natural mud pools – Fiji style!
- Days 5 to 11:** Nadi to the Mamanuca & Yasawa Islands. Spend up to 7 days island hopping amongst the various islands and resorts at your leisure. Book accommodation either before you go in Nadi or onboard the vessel as you travel each day. You can only travel each direction north and south over each sector once jumping off as many times as you like along the way. The boat goes by each place once daily. Choose from many resorts including Beachcomber, Bounty, Mantaray, Octopus and many more!

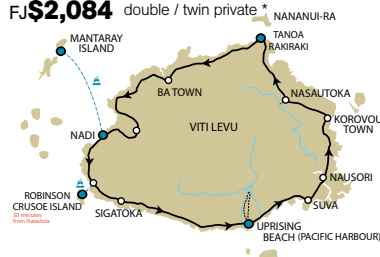
Diving and accommodation inclusive passes

So much fun, from the moment I woke up to when I went to bed!
- Sarah, Czech Republic

Mantaray Diver

FJ\$1,885 dorm / shared basis

FJ\$2,084 double / twin private *



Travel time: 8 Day / 7 Night trip
Departs from Nadi: Mon, Wed, Sat

Includes: 8 Day / 7 Night trip which includes 8 days travel around Viti Levu Island & Mantaray Island with 4 dives at Mantaray Island Resort over 2 awesome days! Highlights include plenty of time to relax, swim or dive on Fiji's best beaches, village visits, kava ceremony, hot pools, mud pools, jungle trek, water fall swimming and 7 nights accommodation with 1 night each at Robinson Crusoe Island, Uprising Beach Resort, Tanoa Rakiraki Hotel, Nadi and 3 nights at Mantaray Island Resort. Includes return boat transfers to Mantaray Island. A compulsory meal package is applicable on Robinson Crusoe Island and Mantaray Island paid direct to the resort. Departs Nadi on Monday, Wednesday and Saturdays with pickups at all hotels and resorts.



- Day 1:** Nadi to Robinson Crusoe Island including Nadi Town, jungle boat trip and the afternoon on the island including a snorkelling trip to a nearby reef!
- Day 2:** Robinson Crusoe Island to Uprising Beach including the scenic Coral Coast and the famous Uprising rainforest trek before a swim at the mile long Uprising Beach.
- Day 3:** Uprising Beach Resort to Tanoa Rakiraki including Suva city tour, Nasautoka Highland Village, school / orphanage visit and bilibili rafting
- Day 4:** Tanoa Rakiraki to Nadi including Ba Town, and then onto the Sabeto Valley, where you can soak in natural mud pools – Fiji style!
- Day 5:** Nadi to Mantaray Island, arrive at this amazing island late morning, just in time for lunch!
- Day 6:** Diving! Spend your morning doing your first two open water dives around the amazing reefs and spend the afternoon spotting Manta Rays or relaxing on the amazing beach.
- Day 7:** Start the day with your second two dives and the afternoon doing more sun, sand and relaxation.
- Day 8:** Mantaray Island to Nadi, depart the island and get back to Nadi early evening.

Short Stays

I never expected to experience so much in Fiji and see such diversity. Was amazing!
James - UK

Coral Coaster

FJ\$383 dorm / shared basis

FJ\$562 double / twin private *



Travel time: 2.5 Day / 2 Night trip
Departs from Nadi: Mon, Wed, Sat

Includes: 2.5 Day / 2 Night trip which includes Day 1 and 2 of the Whole Hula trip to Robinson Crusoe Island and Uprising Beach Resort. Highlights include plenty of time to relax, swim or dive on Fiji's best beaches, rainforest trek and water fall swimming. The trip includes 2 nights accommodation, including 1 night each at Robinson Crusoe Island and Uprising Beach Resort. Also includes an coach transfer back to Nadi on the morning of day 3 from Uprising Beach Resort. Minimum 2.5 day trip but can be extended for those passengers wanting to jump off and stay anywhere along the way for as long as they like. A compulsory meal package is applicable at Robinson Crusoe Island paid direct to the resort upon arrival. Departs Nadi on Monday, Wednesday and Saturdays with pickups at all hotels & resorts.



- Day 1:** Nadi to Robinson Crusoe Island including Nadi Town, jungle boat trip and the afternoon on the island including a snorkelling trip to a nearby reef!
- Day 2:** Robinson Crusoe Island to Uprising Beach including the scenic Coral Coast and the famous rainforest trek before a swim at the mile long Uprising Beach.
- Day 3:** Uprising Beach Resort to Nadi, via the Queens Road coach transfer.

Fiji passes key



INCLUDES ISLAND TRANSFERS



ACCOMMODATION NIGHTS INCLUDED



COMPULSORY MEAL PACKAGE(S) APPLICABLE @ ALL ISLAND RESORTS



DIVING INCLUDED

Arrive and depart in style!

After amazing experiences in Australia & NZ, Fiji was even better. So much to offer in such a short time. Thanks Feejee Ex!
Lucy - Scotland

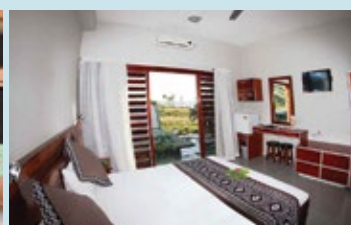
Only Feejee Experience can offer you a personalised airport meet, greet & farewell, private air-conditioned airport transfers, 1 night air-conditioned accommodation in Nadi on your first and/or last night, as well as a Feejee Experience sulu on arrival. A sulu is a traditional piece of clothing you will need for village or cultural visits in Fiji and is normally valued at FJ\$15. Feejee Experience gives you all this as part of your Bula (Arrival) Pack or Moce (Departure) Pack! You can choose which one of the great budget resorts in Nadi you want to stay at or if not, we'll choose one for you! Once you've booked your Bula and Moce Pack just drop us an email with your choice at least 72 hours prior to you arriving or let us know at time of booking.

Resorts to choose from are

- Nadi Bay Resort
- Smugglers Cove Resort
- Tanoa Skylodge Hotel
- Bamboo Backpackers
- Nadi Downtown Backpackers



BULA!
"Hello"



Bula Pack (arrival)

FJ\$104 dorm / shared basis

FJ\$152 double / twin private *

Moce Pack (departure)

FJ\$104 dorm / shared basis

FJ\$152 double / twin private *

* Double / Twin Private basis prices are per person valid for two passengers travelling and booking together.

Our beach resorts – Fiji's best!

What an awesome experience seeing parts of Fiji which I never expected to. A great way to spend our winter holiday
- Rebecca - Australia

ROBINSON CRUSOE ISLAND

Long time a favourite with travellers. Robinson Crusoe Island offers an amazing island experience, white sandy beaches and an array of activities. Depending on the day you arrive, you might see the Fiji famous fire dancers! Only with Feejee Experience do you get boat transfers included in your pass!



TANOAKIRAKI HOTEL

At the very northern tip of Fiji, the colonial Tanoa Rakiraki Hotel is a perfect place to relax after an action packed day of travel, village visits, city tours and activities. Enjoy the local Indo-Fijian cuisine and a dip in the pool at sunset.



MANTARAY ISLAND RESORT

There is a host of small, budget resorts in the Yasawa Group but after a lot of looking around, Feejee Experience chose what we think is the best! Mantaray Island has great food, a world class reef right on the beach and great facilities for an island resort. This little bit of paradise cannot be beaten for sun, fun and entertainment. Swimming with the stunning manta rays is from May - October.



UPRISING BEACH RESORT

This is an amazing beach front resort at Pacific Harbour, located on a beach as long as the eye can see. Enjoy the great restaurant, funky bar and nightly activities. Uprising Beach Resort is the training base of the famous Fiji 7's Rugby team so if you're lucky, you might be there in time for tackling practice!



BEACHCOMBER ISLAND RESORT

This world famous island is known for its parties, activities and idyllic island setting! Fantastic island feasts, a huge range of water sports, scuba diving, nightly music and entertainment, and some of the friendliest people on the planet all make Beachcomber so very hard to leave!



BLUE LAGOON BEACH RESORT

Blue Lagoon Beach Resort is located in the beautiful, tranquil Lagoon of Nacula Bay, on picturesque Nacula Island, located in the northern Yasawa Islands, Fiji. Reaching the stunning white beaches, and crystal blue waters is a once in a lifetime experience not to be missed.



Contact us

or come and see us at our
24 hour Nadi airport office

www.feejeeexperience.com

PO Box 9612,

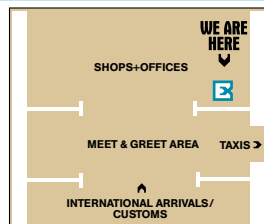
Nadi Airport, Fiji Islands

Phone: (+679) 672 5950 or

(+679) 672 3311

Fax: (+679) 672 0184

Email: enquiries@feejeeexperience.com



Book with this 'Experience'd Travel Expert



Need more info?

Check out our website for more detailed pass itineraries, Fiji information, planning tools, see what our passengers say about us and their adventures, and to book online!
www.feejeeexperience.com



FREQUENTLY ASKED QUESTIONS

What's included in my pass?

Everything as per the itinerary on the passes pages, some passes include accommodation, breakfasts etc so be sure to check the details of your pass.

Can I change my departure dates?

For those 'transport only passes' you can change your dates as often as you like! Simply call us on +679 672 5950 or email us at enquiries@feejeeexperience.com to book your next travel date. For all passes you can change your departure date as many times as you like prior to arrival. We know you may delay or bring forward your arrival to Fiji so that's no problem at all! Just be sure to email us so we know when to expect you!

Why Feejee Experience opposed to other Fiji tour operators or adventure companies?

Because we show you all of Fiji! Unlike others who may concentrate on just one island or group of islands we take you just about everywhere to show you 'the real Fiji' whilst still ensuring your sun tan is the best it can be for your trip home! We work with a host of partner operators to package up the ultimate 'experience' for you!

What should I bring?

Sunscreen (SPF30), insect repellent, water, cash, swimwear, towel, a hat and your camera, oh and some clothes would be handy! If you plan on doing the rainforest trek, bring some good walking shoes. Bring a t-shirt or shirt that covers your shoulders for our village visits. If you want to bring school stationery for our school visits you're most welcome, but not expected to. If you have large items like surfboards for instance, please let us know in advance so we can advise if the vehicle allocated for your departure can cater or not.

How much money do I need?

Everyone is different and so are there budgets. Accommodation is included in most passes, but for those on Transport Only passes, a dorm bed is around F\$40-50 per night. All passes include compulsory meal packages paid direct to various resorts and are approximately FJ\$79-FJ\$109 per day depending on the duration of your stay and amount of meals included in the package. All resorts accept major credit cards but we recommend always having some cash on hand for local purchases and as there are no ATM machines on any of the outer islands so be sure to visit one prior to travel.

What do I do when I arrive?

Your Feejee Experience ticket, vouchers and information packet can be collected upon presentation of your voucher or confirmation letter at the 24 hour Feejee Experience airport office located in the Nadi Airport arrivals hall.

Is accommodation included?

Accommodation is included in all our passes except the Hula Loop and Big Kahuna.

How long is my pass valid for?

Your pass is valid until you have completed your trip.

